

2.4.2 Bearing series SFA/SLA

2.4.2.1 Fixed bearing SFA

The stage height of the fixed bearing is matched to the supported bearing SLA (page 111) and to the nut housing (page 112). The pillow block can be fixed from the top (S1) and bottom (S2).

The stop edges on both sides facilitate alignment of the unit. The fixed bearing is pinned using two taper pins or cylindrical pins. The correct end machining for the fixed bearing is type S2-xx/S3-xx (page 106).

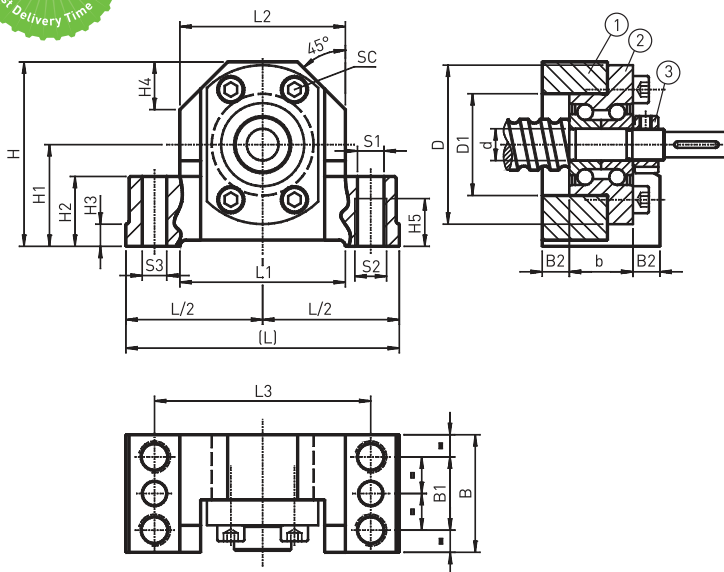


Table 2.22 Dimensions of the bearing unit

Article number	Spindle Ø	L	L/2 js9	L1	L2	L3	H	H1 JS7	H2	H3	H4	H5	d	D	D1	b
SFA06	12	62	31	34	38	50	41	22	13	5	11	9	6	30	19	12
SFA10	16	86	43	52	52	68	58	32	22	7	15	15	10	50	32	20

Table 2.23 Dimensions of the bearing unit

Article number	Spindle Ø	B	B1	B2	S1 H12	S2	S3	Lock nut	SC ISO 4762-10.9
SFA06	12	32	16	10	5,3	M6	3,7	HIR 06	4 x M3 x 12
SFA10	16	37	23	8,5	8,4	M10	7,7	HIR 10	4 x M5 x 20

Table 2.24 Technical data of the bearing

Article number	Bearing	Static Load C_0 axial [N]	Dynamic Load C_{dyn} axial [N]	r max. [r/min]
SFA06	ZKLFA0630.2Z	6100	4900	14000
SFA10	ZKLFA1050.2RS	8500	6900	6800

(1) steel pillow block, (2) bearing, (3) lock nut

Ballscrews

Accessory

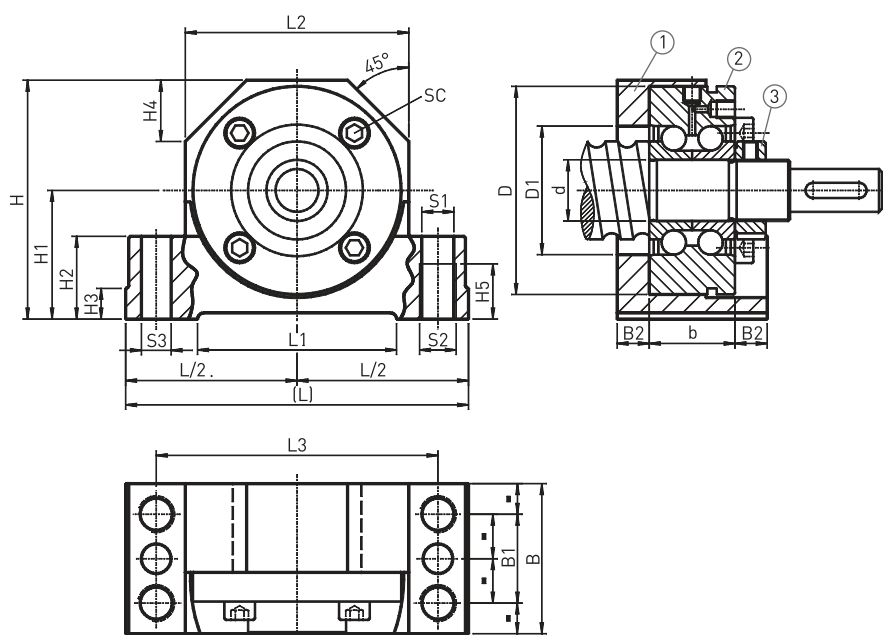


Table 2.25 Dimensions of the bearing unit

Article number	Spindle Ø	L	L/2 js9	L1	L2	L3	H	H1 JS7	H2	H3	H4	H5	d	D	D1	b
SFA12	20	94	47	52	60	77	64	34	22	7	17	15	12	55	32	25
SFA17	25	108	54	65	66	88	72	39	27	10	19	18	17	62	36	25
SFA20	32	112	56	65	73	92	78	42	27	10	20	18	20	68	42	28
SFA30	40	126	63	82	84	105	92	50	32	13	23	21	30	80	52	28
SFA40	50	146	73	82	104	125	112	60	32	13	30	21	40	100	66	34

Table 2.26 Dimensions of the bearing unit

Article number	Spindle Ø	B	B1	B2	S1 H12	S2	S3	Lock nut	SC ISO 4762-10.9
SFA12	20	42	25	8,5	8,4	M10	7,7	HIR 12	3 × M6 × 35
SFA17	25	46	29	10,5	10,5	M12	9,7	HIR 17	3 × M6 × 35
SFA20	32	49	29	10,5	10,5	M12	9,7	HIR 20 × 1	4 × M × 40
SFA30	40	53	32	12,5	12,6	M14	9,7	HIR 30	6 × M × 40
SFA40	50	59	34	12,5	12,6	M14	9,7	HIR 40	4 × M8 × 50

Table 2.27 Technical data of the bearing

Article number	Bearing	Static Load C_0 axial [N]	Dynamic Load C_{dyn} axial [N]	r max. [r/min]
SFA-12	ZKLF1255.2RS	24700	17000	3800
SFA-17	ZKLF1762.2RS	31000	18800	3300
SFA-20	ZKLF2068.2RS	47000	26000	3000
SFA-30	ZKLF3080.2RS	64000	29000	2200
SFA-40	ZKLF40100.2RS	101000	43000	1800

(1) steel pillow block, (2) bearing, (3) locknut